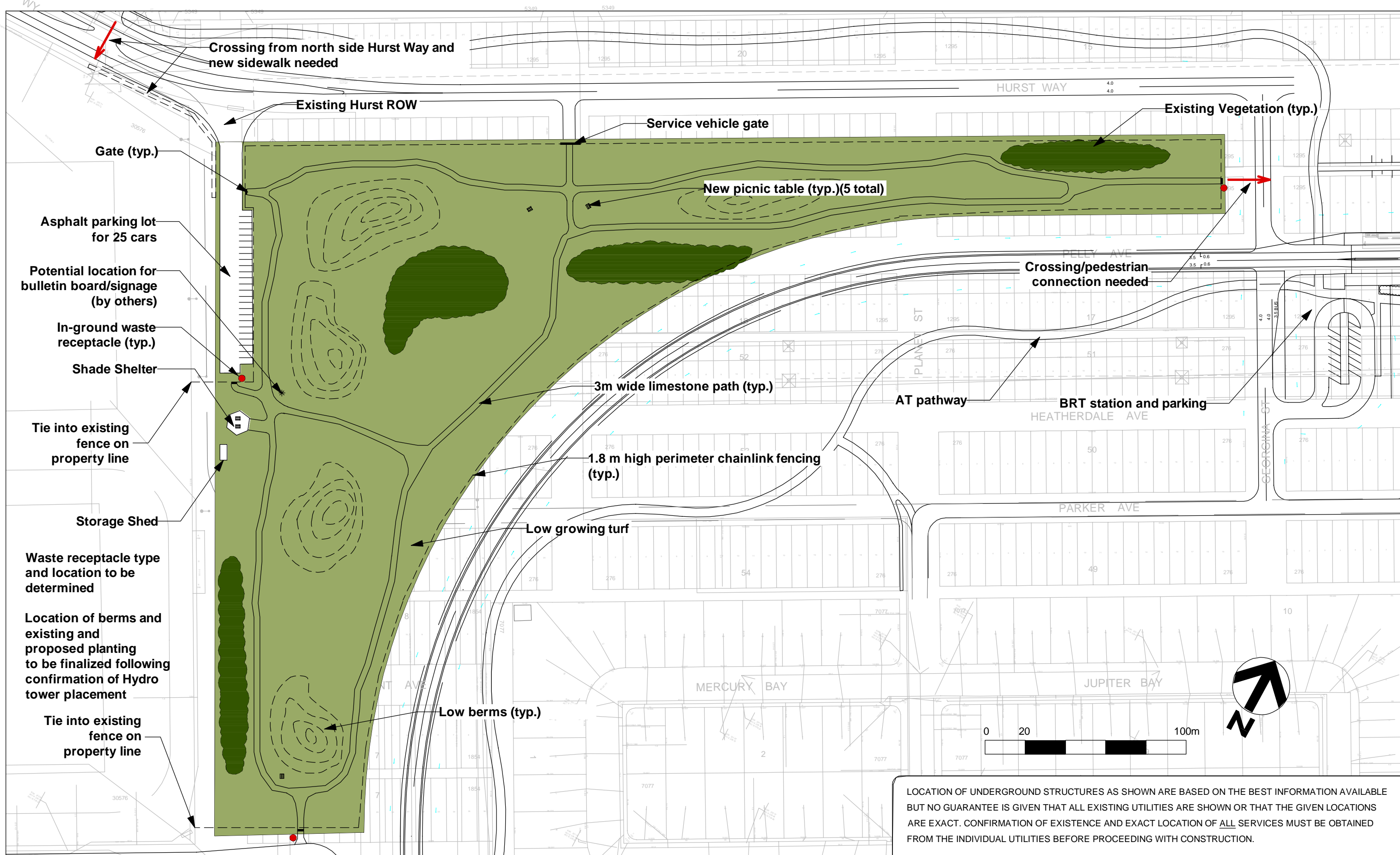


*Appendix II – Proposed Brenda Leipsic Dog Park*



THE CITY OF WINNIPEG  
 Planning, Property and Development Dept.  
 Planning and Land Use Division  
 15-30 Fort Street, Winnipeg, MB, (R3C 4X5)

DESIGNED BY	CH	CHECKED BY	APPROVED BY
DRAWN BY	CH	RELEASED FOR CONSTRUCTION	
HORIZ. SCALE	1 : 1800		
VERT. SCALE			
DATE	Sent/15	MANAGER,	DATE

LOCATION OF UNDERGROUND STRUCTURES AS SHOWN ARE BASED ON THE BEST INFORMATION AVAILABLE BUT NO GUARANTEE IS GIVEN THAT ALL EXISTING UTILITIES ARE SHOWN OR THAT THE GIVEN LOCATIONS ARE EXACT. CONFIRMATION OF EXISTENCE AND EXACT LOCATION OF ALL SERVICES MUST BE OBTAINED FROM THE INDIVIDUAL UTILITIES BEFORE PROCEEDING WITH CONSTRUCTION.

DRAWING TITLE	CAD DRAWING NO.
<b>Parker Lands Proposed Brenda Leipsic Dog Park</b>	
	DRAWING NO.